

Dartmouth Caring

Impact and Cost Saving Report 2021 - Summary



Dartmouth Caring is a small registered charity, supporting vulnerable people in Dartmouth and surrounding rural villages. The aim is to enable people to live happy and vibrant lives, connecting those who are isolated to others and improving health and well-being within our community

Services and activity have developed over time, and Dartmouth Caring support local people through a wide range of services, including: transport, shopping, befriending, carers and young carers support, lunch clubs, counselling, budgeting advice, benefits and housing advice, social activities, and out of hospital support. Specialist 1 to 1 support is provided for people with dementia, mental health issues and facing end of life or a cancer diagnosis. Dartmouth Caring take an holistic approach, looking at an individual and all the issues they are dealing with.

In 2019/20 Dartmouth Caring provided support to 750+ individual clients through over 13,000 interactions. Income was £255,266, and expenditure was £258,006, with 30% - £76,580 coming from statutory sources.

The aim of this report, is to demonstrate the cost savings that the work of Dartmouth Caring generates for the state. It is based on the principles of Social Return on Investment (SROI), and uses a Case Study Cost Benefit Analysis approach. The Case Studies were developed from interviews with Dartmouth Caring clients, and the support staff at Dartmouth Caring.

In 2019/2020

for every £1
income there
was £2.75 in
savings to the
state



for every
£1 invested
there was a
saving of
£9.18

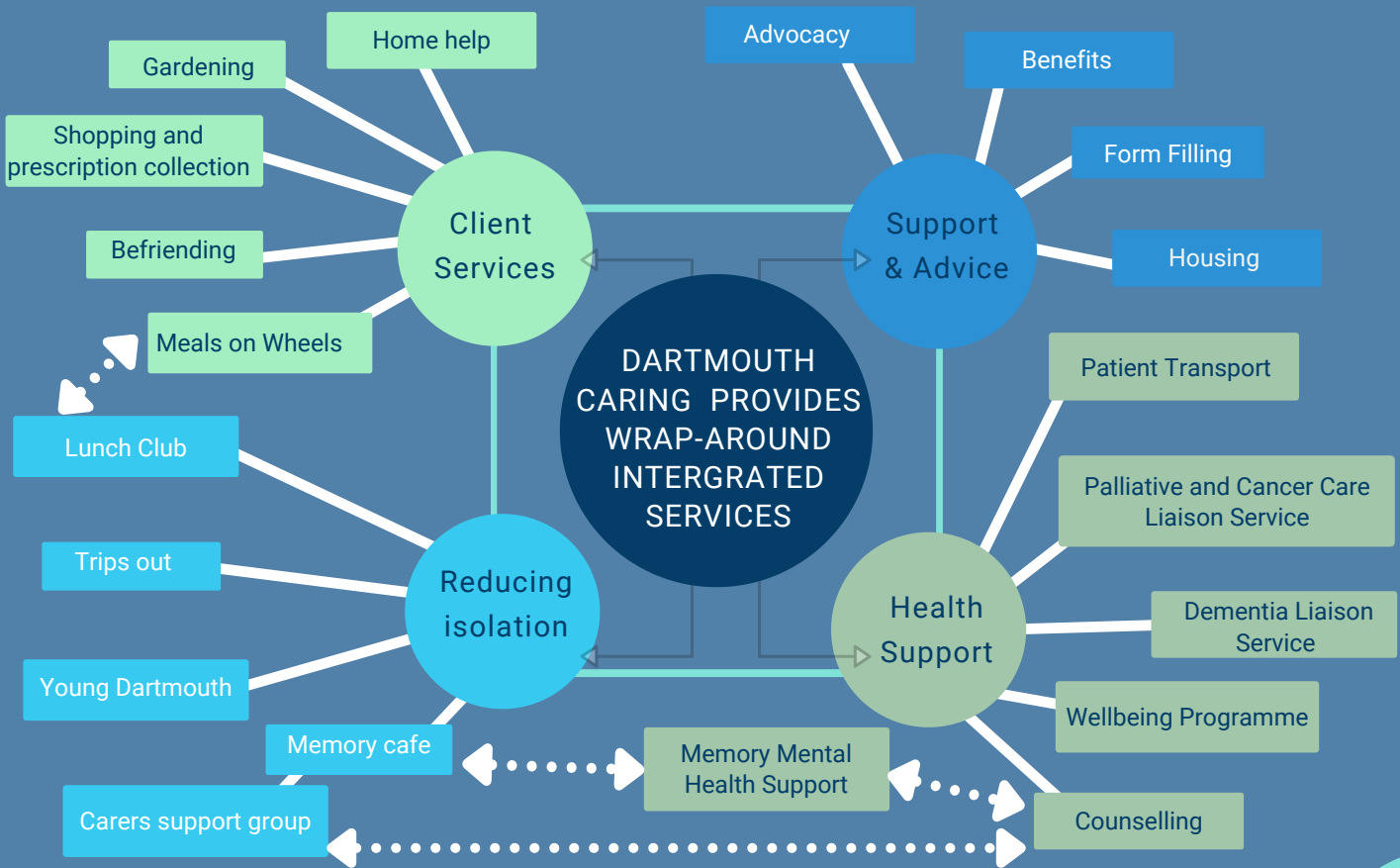


Background



Dartmouth is one of the main towns within the South Hams Local Authority District. Dartmouth is cut off from its nearest large employment area (Torbay) by the River Dart, is distant from the South West's strategic transport networks, and has limited public transport options.

The population of Dartmouth is approximately 7,970. In 2017, 32.7% of Dartmouth's population were aged over 65 years, and the proportion is increasing. Data show that there are pockets of both affluence and deprivation within the area. Dartmouth has very high property prices, causing issues in affordability of housing.



For our Cost Benefit Savings and SROI analysis,* our external researchers looked at the key issues for which Dartmouth Caring provides support and services:

- End of life
- Loneliness and social isolation
- Carer breakdown
- Mental health issues
- Dementia
- Reducing the risk of falls
- Homelessness / housing insecurity
- Malnutrition



*Existing proxies were identified and publicly available costs to show an indication of the savings to the state for individual case studies. The proportion to which Dartmouth Caring's intervention was responsible for the changes (attribution) was considered, and the likelihood of a change occurring without intervention (deadweight). Whether any changes may have caused other impacts for the individuals or for others (displacement) was also considered. The researchers have erred on the side of under-valuing and have not included eg future cost savings and hence have not looked at the drop-off of cost savings. The cost of health and social care interventions have been taken from the Unit Costs of Health and Social Care (2020). (Details about methodology can be found in the full report)

Service specific cost savings



The report also looks at the overall cost savings of some of Dartmouth Caring's services. A summary of this can be found below, and more detail is available in the full report:

End of Life Service

Dartmouth Caring have supported 52 clients with End of Life support in the past year. The worker on this project is part-funded by the state, through a grant of £6,000. The remainder of the costs of this role is funded by Trusts and Foundations.

The average cost of care services in the last 12 months of life are £8,515 on hospital care and £15,240 on social care – a total of £23,755 (Unit Costs of Health & Social Care). This equates to a cost of £475,100 (for the 44 clients with a diagnosis). If support from Dartmouth Caring alleviates just 10% of these costs, that would be a saving of £47,510 – for an investment of £6,000.

Homelessness support

In the last 12 months, Dartmouth Caring supported 6 individuals to move out of homelessness. The additional cost of support from the state for someone rough sleeping (compared to the average person) is estimated as being £13,500. If each of the individuals supported maintains their housing for the next year (at least in part due to Dartmouth Caring), then that will save the state £81,000. If 2 of these clients maintain their secure housing for a further 2 years – there would be an estimated cost saving of £54,000. Support for these individuals is carried out by the general support workers, who are entirely funded through grants from Trusts and Foundations – therefore having no cost to the state.

Dementia Support Service

Dartmouth Caring supported 30 new clients over the past year with a dementia diagnosis. 15 of these have mild dementia; 10 moderate; and 5 severe dementia.

The cost of severe dementia is estimated to be £11,258 (2012/13 costs) per year to health and social care (with additional costs to the individuals). If Dartmouth Caring's support mitigates 10% of these costs, it would provide a cost saving for the state of £5,629.

In 2012/13, the cost of moderate dementia to health and social care, for individuals in the community was estimated to be £2,695 per year; and £2,751 for those with mild dementia. NB these costs are likely to have increased since 2012/13. If Dartmouth Caring's intervention reduced the use of services by 20% for the individuals with moderate and mild dementia, the cost saving to the state in the past year (at 2012/13 prices) would have been: £5,390 for those supported with moderate dementia and £8,253 for those with mild dementia. This would be offset by £6,000, which is the state funded grant towards this worker.

Service specific cost savings cont.



Mental health

Dartmouth Caring supported 10 individuals, excluding dementia, with diagnosed (or diagnosable) mental health issues in the last year, and 31 individuals with lower level mental health issues.

The average cost of services for depression (for those in touch with services) was £2,085 a year (in 2007); and the average cost for anxiety disorders was £1,104 a year (in 2007). Dartmouth Caring provide a range of support to individuals with a mental health diagnosis (eg with housing / money advice; social activities; wellbeing calls/support). We are counting an average 15% reduction in the need for statutory support, a saving of £2,392 per year to statutory services in the Dartmouth area.

Dartmouth Caring support for individuals with lower level mental health issues (i.e before they reach crisis point, or need support from the state) through their specialist worker is funded by Trusts and Foundations. If 6 of these individuals (1 in 5) are diverted from needing to use statutory support services (a reasonable estimate made by Dartmouth Caring staff), this would create a saving to the state of £9,568 per year in avoided costs (based on an average of the costs of anxiety and depression to the state, at 2007 prices).

Reducing Isolation

Twenty five per cent (187) of the clients that Dartmouth Caring support benefit from a reduction in social isolation through: receiving support from volunteers or workers; attending social groups/ opportunities; meeting others with a similar situation from themselves; and re-kindling or developing new friendships.

For 15% of clients (112), Dartmouth Caring provide a large proportion (over 75%) of their social interaction and support. The cost of isolation to the state, is estimated to be £6,000 over a decade. If we allocate 75% of this cost to these 112 clients for whom Dartmouth Caring provide most of their social contact; and an average of 25% for those for whom Dartmouth Caring provide a lesser amount of support, this would give an annual cost saving of £61,650 each year.

Volunteering

In addition, volunteers input their time to Dartmouth Caring. In 2019/20, Dartmouth Caring had 149 volunteers, who carried out over 2500 hours of volunteering for the Charity. This ranged from driving, to befriending to support within specialist services such as the Memory Café and visual impairment group. If this was costed at minimum wage (£8.21 during that year), this equates to £20,525 of donated time.

Summary



It should be noted that we have not looked at all the services delivered by Dartmouth Caring. The table below summarises the savings from the services which have been researched.

Service	Cost to State*	Saving to State
End of life support	£6,000	£475,100
Support with homelessness	£0	£135,000
Dementia liaison service	£6,000	£18,972
Mental health support service	£0	£11,960
Reducing isolation	£0	£61,650

*these are service specific input from the State, additional £s are received from the state towards the overall service

In 2019/20, Dartmouth Caring had an income from the state of £76,580, and as illustrated in this report, an estimated cost saving to the state of £702,682 – so for every £1 invested, there was a saving of £9.18. *NB this does not include all of Dartmouth Caring's work – the overall cost saving is likely to be much higher.*

In 2019/20, Dartmouth Caring's total income was £255,266. So for every £1 income, Dartmouth Caring created an estimated £2.75 in savings to the state. *NB this does not include all of Dartmouth Caring's work – the overall cost saving is likely to be much higher.*

To find out more about the Charity and to make donations please visit
www.dartmouthcaring.co.uk

This report was produced for
Dartmouth Caring by Clarity CIC
www.claritycic.org.
2021

